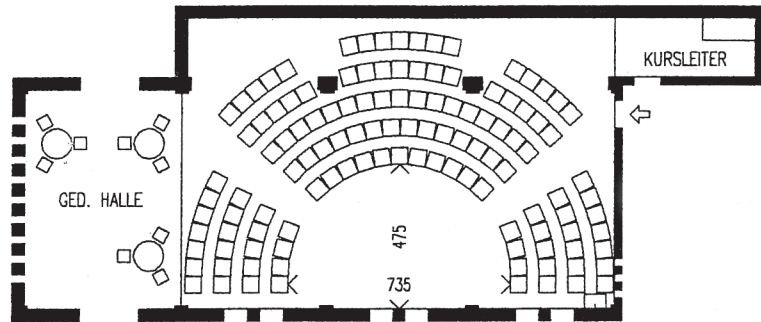


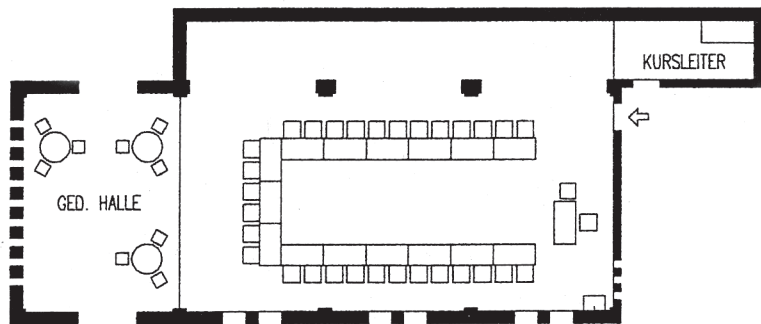
# PLENUM ATELIER

FLAECHE 137.0m<sup>2</sup> LAENGE 14.30m BREITE 9.60m HOEHE 3.05m

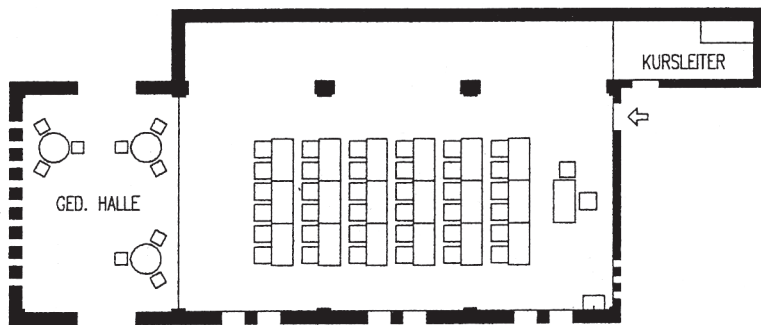
KONZERT 120 PERS.



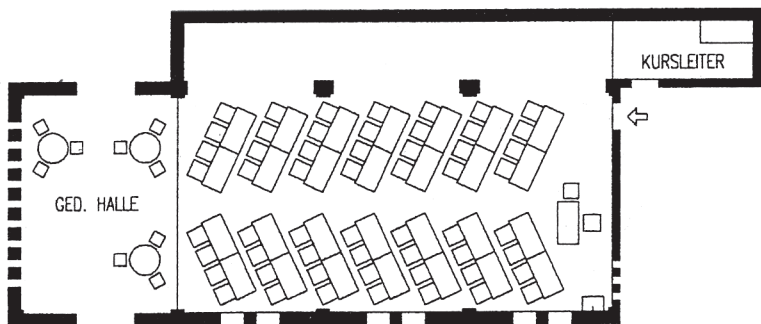
U-FORM 30 PERS.



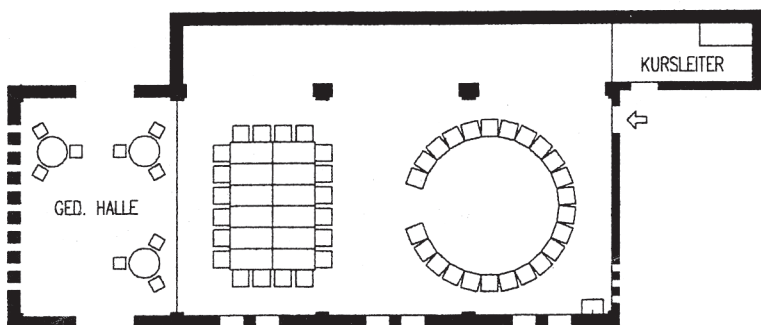
FRONTAL 36 PERS.



FRONTAL 56 PERS.



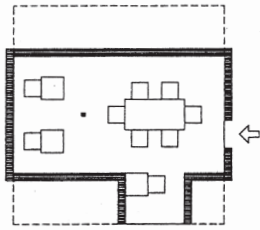
BLOCK + KREIS 44 PERS.



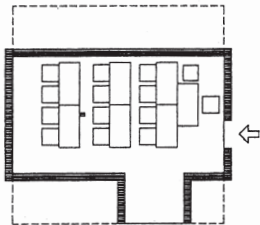
# GRUPPENRAUM

FLAECHE 30.0m<sup>2</sup>

LAENGE 7.10m



BLOCK 9 PERS.

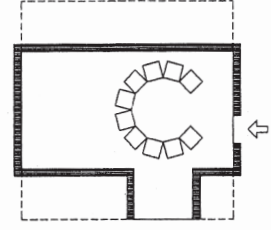


FRONTAL 12 PERS.

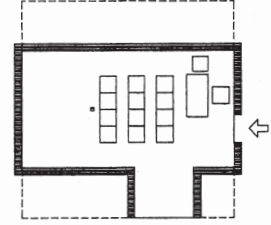
# ATELIER 1

BREITE 4.20m

HOEHE 3.10m



KREIS 10 PERS.

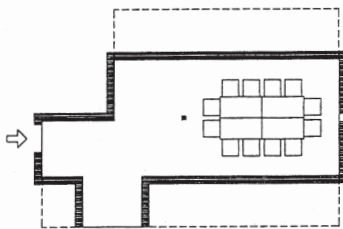


KONZERT 12 PERS.

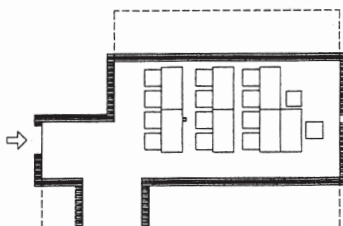
# GRUPPENRAUM

FLAECHE 37.0m<sup>2</sup>

LAENGE 8.80m



BLOCK 12 PERS.

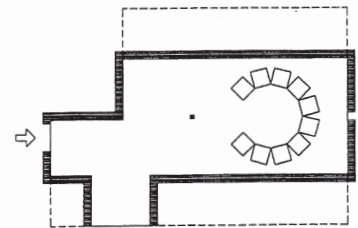


FRONTAL 12 PERS.

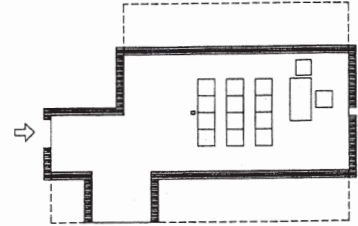
# ATELIER 2

BREITE 4.20m

HOEHE 3.10m



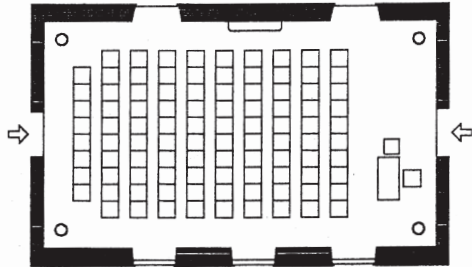
KREIS 10 PERS.



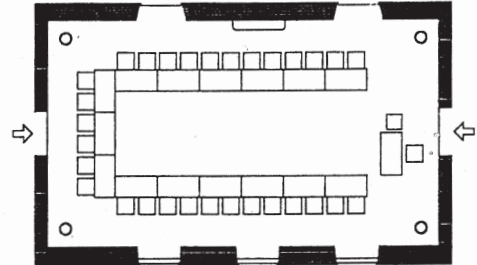
KONZERT 12 PERS.

# PLENUM FESTSAAL

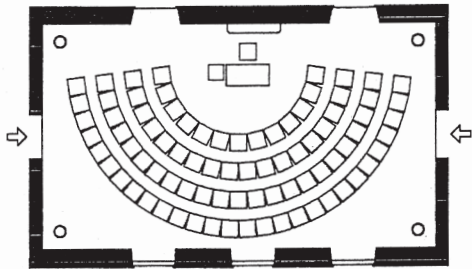
FLAECHE 97.0m<sup>2</sup> LAENGE 13.05m BREITE 7.45m HOEHE 3.85m



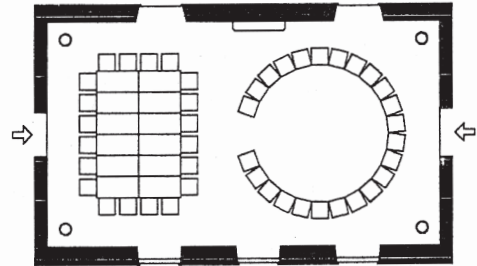
KONZERT 98 PERS.



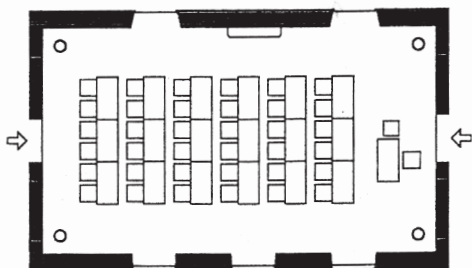
U-FORM 30 PERS.



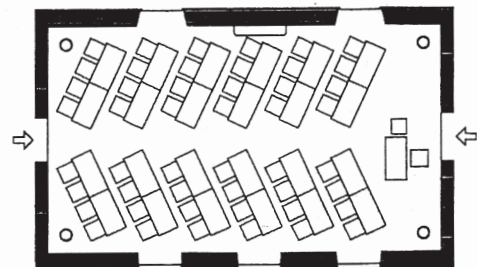
KONZERT 82 PERS.



BLOCK + KREIS 44 PERS.



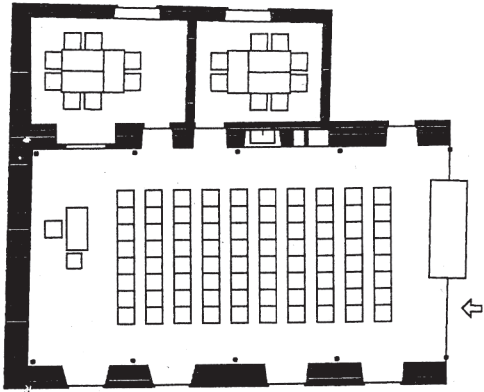
FRONTAL 36 PERS.



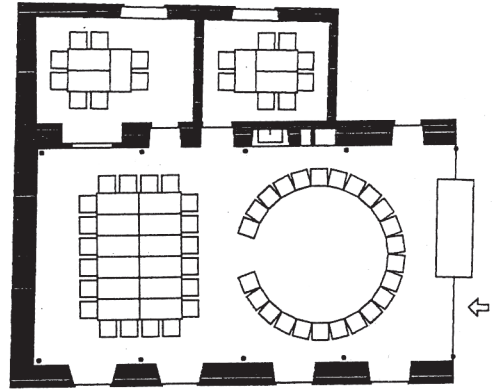
FRONTAL 48 PERS.

# PLENUM SUEDSAAL

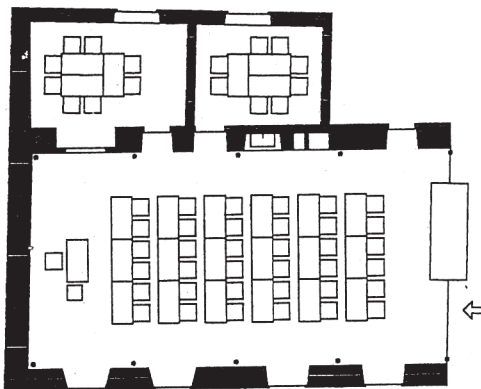
FLAECH 100.0m<sup>2</sup> LAENGE 13.95m BREITE 7.15m HOEHE 2.72m



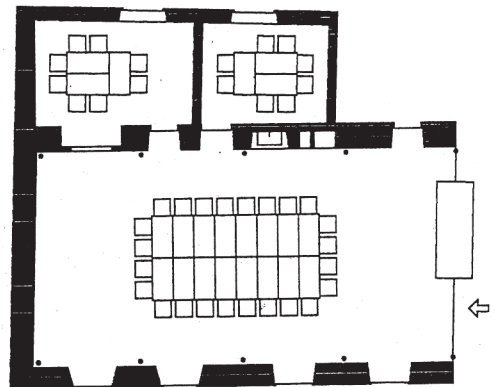
KONZERT 80 PERS.



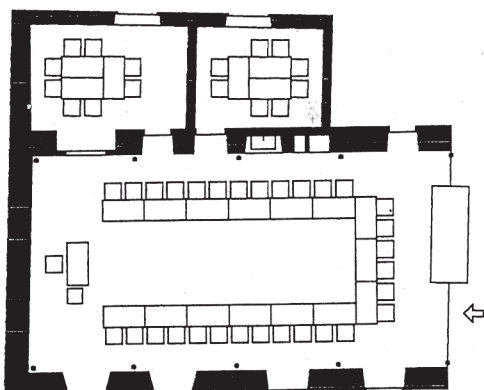
BLOCK + KREIS 44 + 16 PERS.



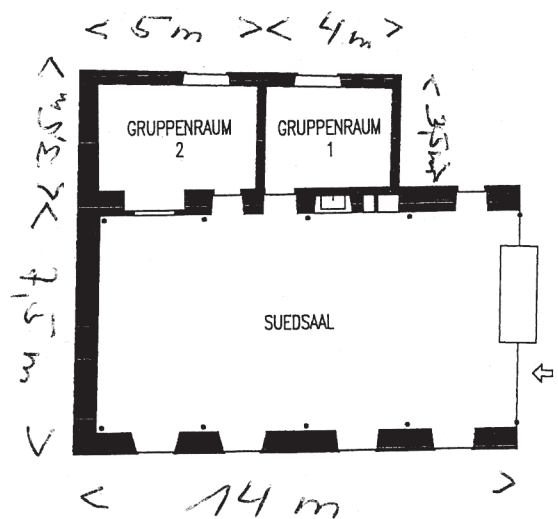
FRONTAL 36 + 16 PERS.



BLOCK 24 + 16 PERS.



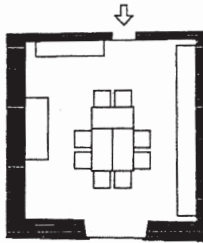
U-FORM 30 + 16 PERS.



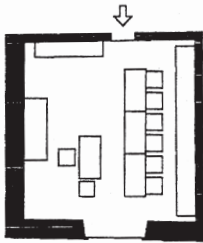
## GRUPPENRAUM

FLAECHE 34.0m<sup>2</sup>

LAENGE 6.00m



BLOCK 8 PERS.

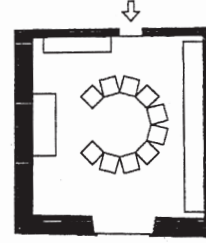


FRONTAL 6 PERS.

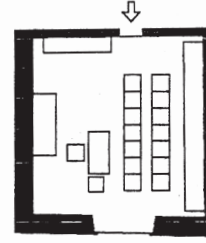
## CHEMINEESAAL

BREITE 5.75m

HOEHE 3.95m



KREIS 10 PERS.

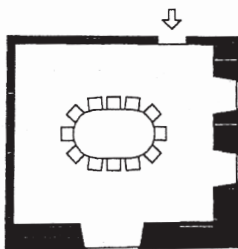


KONZERT 14 PERS.

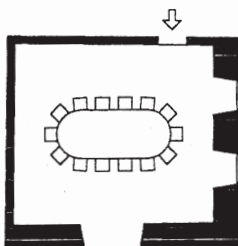
## GRUPPENRAUM

FLAECHE 40.0m<sup>2</sup>

LAENGE 6.60m



BLOCK 12 PERS.

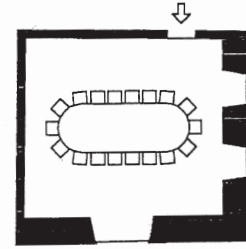


BLOCK 14 PERS.

## TAEFERSAAL

BREITE 6.10m

HOEHE 3.90m

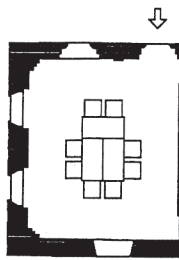


BLOCK 18 PERS.

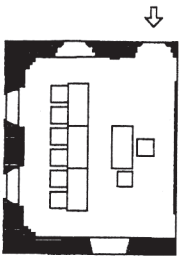
## GRUPPENRAUM

FLAECHE 30.0m<sup>2</sup>

LAENGE 5.90m



BLOCK 8 PERS.

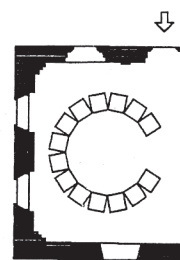


FRONTAL 6 PERS.

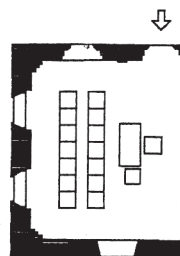
## GEWOELBE NORD

BREITE 5.10m

HOEHE 3.75m



KREIS 14 PERS.

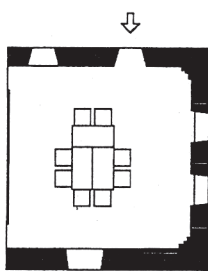


KONZERT 14 PERS.

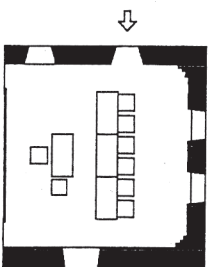
## GRUPPENRAUM

FLAECHE 37.0m<sup>2</sup>

LAENGE 6.05m



BLOCK 8 PERS

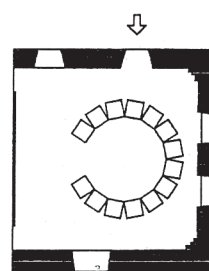


FRONTAL 6 PERS.

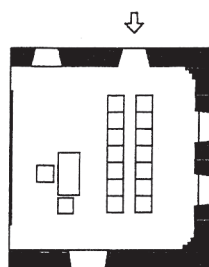
## GEWOELBE SUEDE

BREITE 6.15m

HOEHE 3.75m



KREIS 14 PERS.



KONZERT 14 PERS.